

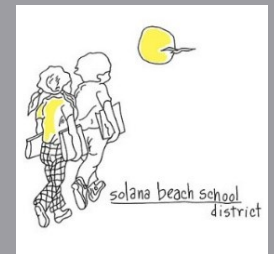


Solana Beach School District

Item 6A: Solana Vista

...a Measure JJ Modernization Project

Board Meeting
January 17, 2019



Agenda

- Update since October 2018
- Schematic Site Diagrams and Massing Models
- Update on Traffic Study
- Timeline
- Direction/Recommendation

Activities To Date

- Design Team Meetings May 2017 – September 2018
- Focus Area Meetings November 2017
- SV Staff Meetings April 2018-December 2018
- SV Site Council Meeting May 2018
- Board Update October 2018
 - Revised Site Layouts
 - Enrollment Information and Projections
 - School Size
- Neighborhood HOA Meeting November 2018

On the Calendar:

- SV Project Community Meetings
 - January 23, 2019 10:00 am DO Board Room
 - February 5, 2019 6:00 pm SV Kiva

01/17/2019



Solana Vista Schematic Design

- 16 standard classrooms
- 8 specialty classrooms
- Prepare for future (up to 4 additional permanent classrooms)
- 350-400 student capacity
- Administration w/ support spaces at front of school
- Media Center centralized in campus
- Academic Court / Garden adjacent to Media / STREAM
- Multi-Purpose / Kitchen located to allow public access/deliveries
- Lunch Area adjacent to Multi-Purpose & Playfields
- Interior circulation – “School Under One Roof”

Traffic Study Update

- **2018 Traffic Study:**
 - Consultant provided traffic study as required under CEQA for school construction
 - Intersection study included:
 - Santa Carina
 - Santa Cecelia, and
 - Santa Bartola
 - Consultant findings indicate no significant impact on streets surrounding Solana Vista;
 - Based on the site layout
 - The driveway locations
 - Expected population
- **2019 Traffic Study Update:**
 - Provided once final points of ingress/egress are determined
 - Approved by governing jurisdictions (CDE, Coastal Commission, and City of Solana Beach)

Concept 1 – Site Diagram - Single Story



Concept 1 – Site Diagram - Single Story



Building Square Footage 60,020.70

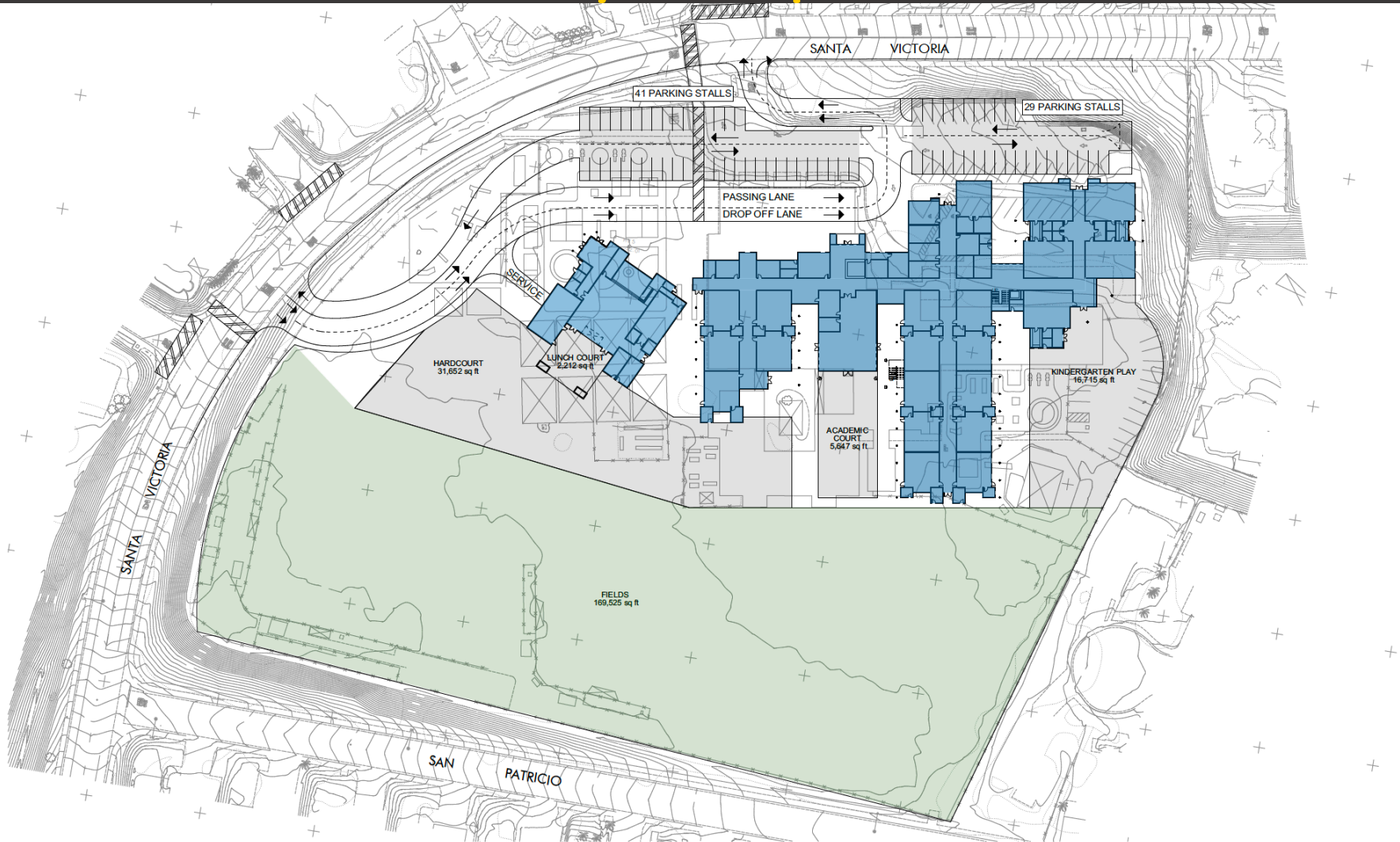
ALPHASTUDIO DESIGN GROUP
6152 INNOVATION WAY
CARLSBAD, CALIFORNIA 92009

SOLANA VISTA ELEMENTARY SCHOOL RECONSTRUCTION
SOLANA BEACH SCHOOL DISTRICT

SCHEMATIC FLOOR PLAN
SCALE: 1/16" = 1'-0"
1/16/2019
SC-02

Concept 1 – Single Story Massing

Concept 2 – Site Diagram Partial 2-Story Campus



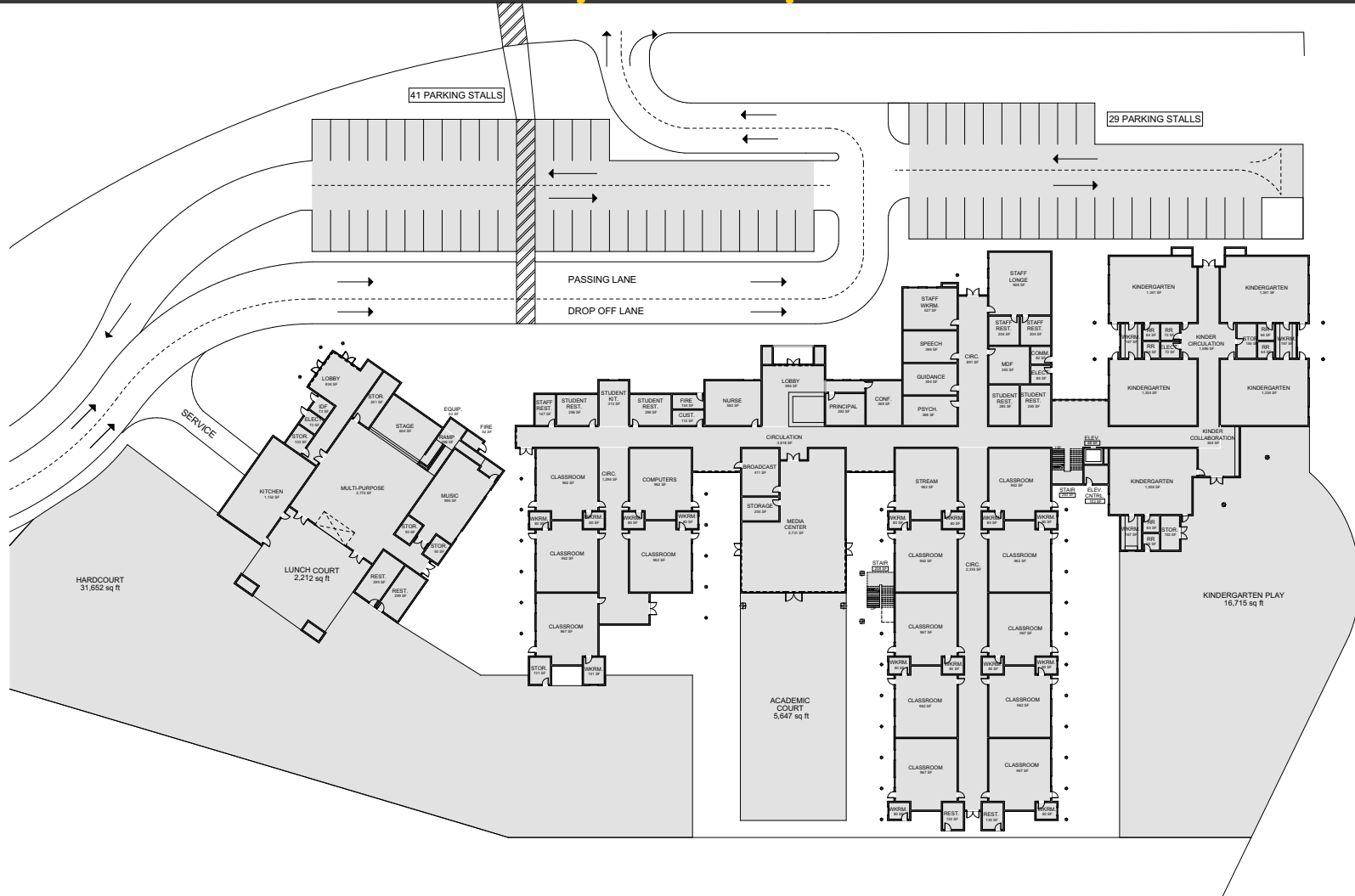
ALPHASTUDIO DESIGN GROUP
6152 INNOVATION WAY
CARLSBAD, CALIFORNIA 92009

SOLANA VISTA ELEMENTARY SCHOOL RECONSTRUCTION
SOLANA BEACH SCHOOL DISTRICT

PARTIAL TWO STORY OPTION

SCHEMATIC SITE PLAN
SCALE: 1" = 30'
1/16/2019
SC-01

Concept 2 – Site Diagram Partial 2-Story Campus

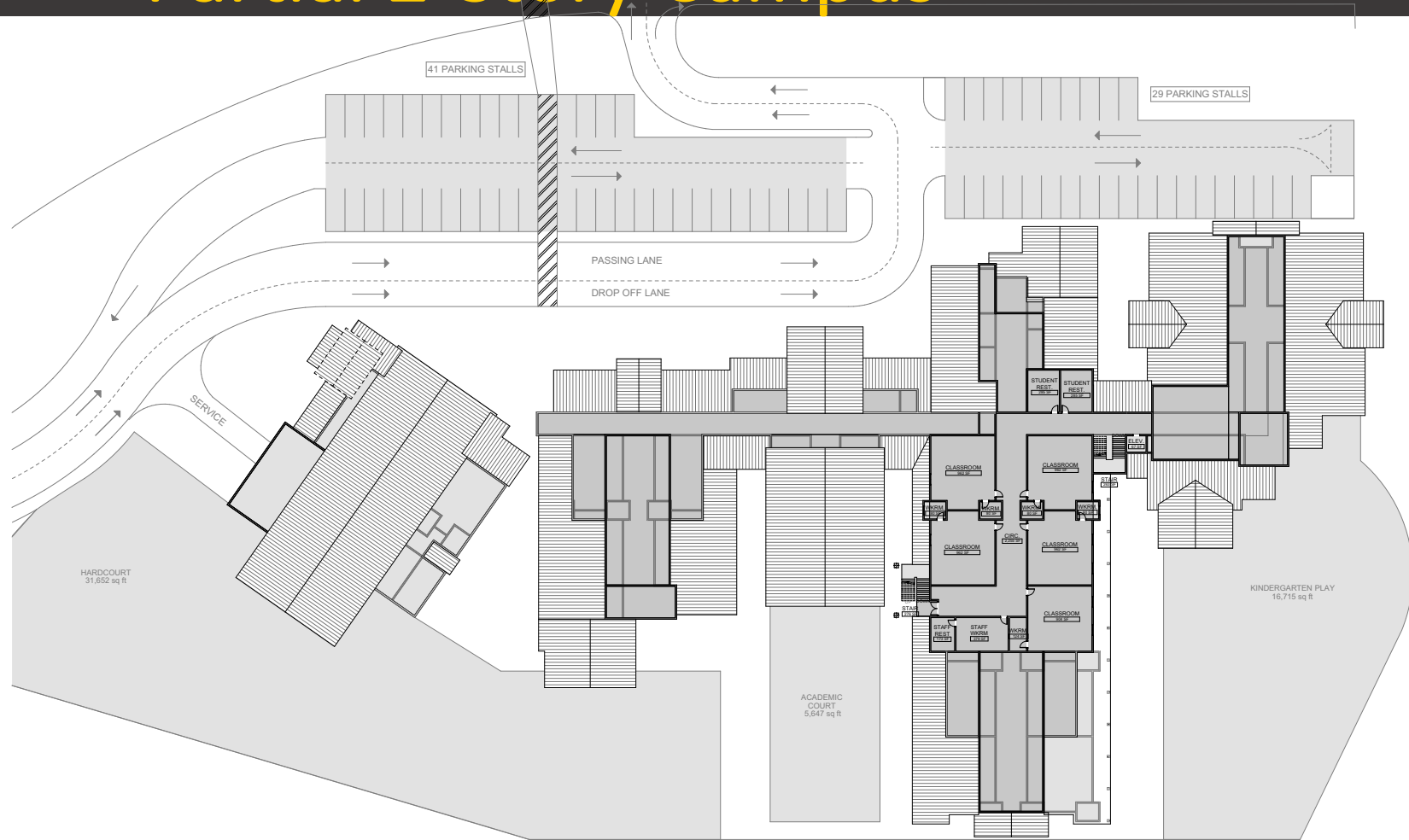


ALPHASTUDIO DESIGN GROUP
6152 INNOVATION WAY
CARLSBAD, CALIFORNIA 92009

SOLANA VISTA ELEMENTARY SCHOOL RECONSTRUCTION
SOLANA BEACH SCHOOL DISTRICT

SCHEMATIC FIRST FLOOR PLAN
SCALE: 1/16" = 1'-0"
1/16/2019
SC-02

Concept 2 – Site Diagram Partial 2-Story Campus



Building Square Footage 63,233.64

ALPHASTUDIO DESIGN GROUP
6152 INNOVATION WAY
CARLSBAD, CALIFORNIA 92009

SOLANA VISTA ELEMENTARY SCHOOL RECONSTRUCTION
SOLANA BEACH SCHOOL DISTRICT

SCHEMATIC SECOND FLOOR PLAN
SCALE: 1/16" = 1'-0"
1/16/2019
SC-02

Concept 2 – Partial 2-Story Campus Massing

Direction

- Seek direction to further develop detailed schematic plan(s) for:
 - Single Story Campus, and/or
 - Partial 2-Story Campus

Staff to return to the Board for approval of final schematic design in February 2019

Board Discussion

